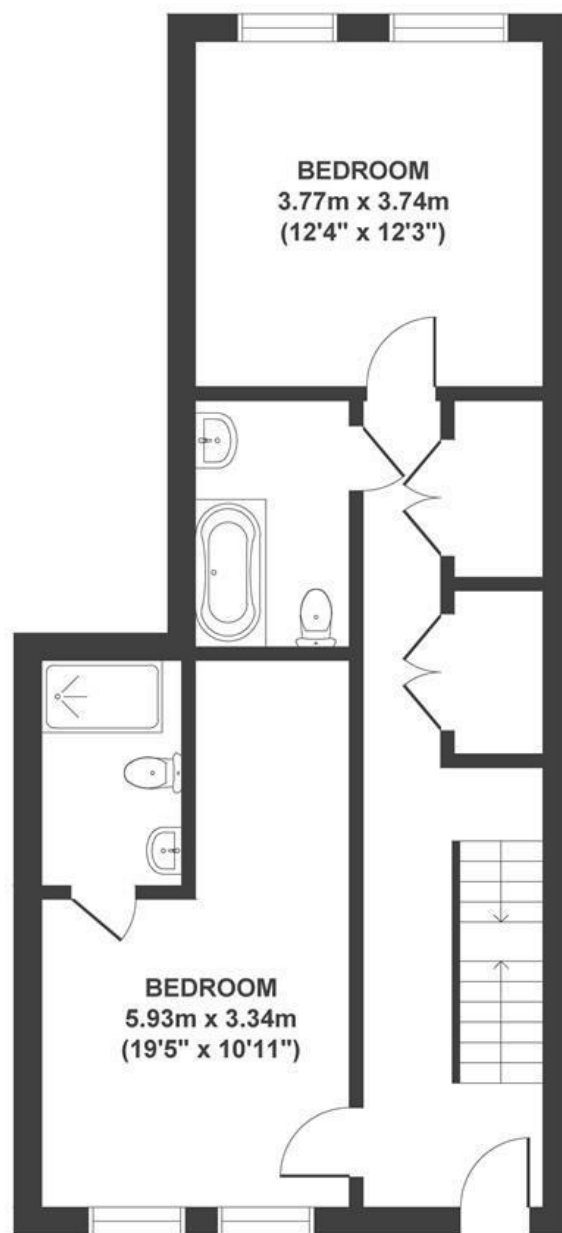


The Boot Factory

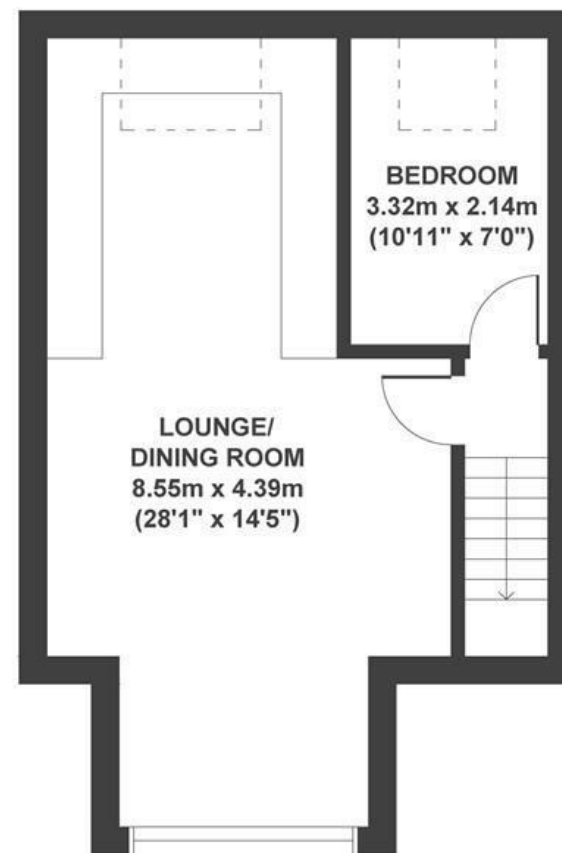
ST GEORGE

APPROXIMATE FLOOR AREA

96 SQM / 1033 SQFT



FIRST FLOOR



SECOND FLOOR

Boardwalk

Beaconsfield , BRISTOL

£

£340,000



BS5 8FB

zzz

3 Bedrooms



2 Bathrooms

"The flat itself is a unique layout with the original factory beams visible upstairs. The open plan diner/lounge/kitchen has been perfect for hosting dinners with friends and family. We've appreciated the gated community and secure parking, our neighbours are lovely with occasional meet ups for pub quizzes. You're spoiled for choice for food nearby, with Loaf and The Orchard for excellent coffee/bakeries and The Red Church / The Lock Up as well. St George's park is on the doorstep."

